

F-3 LAND ROLLER



**Maximum Contouring,
FORWARD™ Unfolding**



THE MOST EFFICIENT AND VERSATILE LAND ROLLER IN THE INDUSTRY

If you're one of the many progressive and innovative farmers, you'll need new tools and new farming practices to go along with your new crops. And one of your most important pieces of equipment will be a land roller.

Rite Way Land Rollers apply uniform weight and

surface contact to efficiently press rocks into the ground and leave a smooth surface. That means a smoother and faster ride when you use your sprayer, and a trouble-free harvest.

GROUND-HUGGING ROLLERS

Rite Way Land Rollers have shorter drum segments that float independently. That means they maintain constant ground pressure and contour to the ground underneath, continuing to work effectively as the terrain changes.



Rite Way Land Rollers' dual wheels are the key to our patented FORWARD™ unfolding system .

Go from transport mode to field mode and back again in minutes while moving forward. This unique FORWARD™ system allows you to use two or more pieces of equipment in tandem, and transport the equipment from field to field.

BETTER CROPS / BETTER YIELDS

At seeding time, rolling your land allows for better and more even crop germination. Your crop will start growing faster and will ripen more evenly, which translates into better yields.

At harvest time, you can get your combine header closer to the ground to pick up every valuable part of your crop –

and not have to worry about damaging dirt or rocks going through your combine.

After harvest, your land roller will provide a better way of dealing with hard-to-manage crop residues – even cornstalks. One trip over the harvested crop and the cornstalks are crushed and open to the elements.



EASY TRANSPORT

Our three-section rollers are ideally suited to being pulled in tandem with other implements such as air seeders and tanks. With our patented **FORWARD™** unfolding system, you can go from transport mode to field mode in minutes while driving forward.

Choose an F-3 roller that folds to 14' for transport, or one of our narrow transport models that fold to a mere 11'6"

Pivot wheel in transport mode. The slow-moving vehicle sign also serves as a wheel-angle indicator when unfolding.

LARGE DRUM

The large 42" drum provides the ideal combination of size and weight to efficiently press rocks into the ground without increasing compaction. The larger diameter drum also requires less horsepower per foot to pull.



Rite Way Land Rollers apply both weight and surface contact to prepare your land.



Rolling cornstalks allows them to break down during the winter.



F-3 Land Roller Specifications

MODEL	WING CONFIGURATION	TRANSPORT LENGTH	TRANSPORT WIDTH	WEIGHT (approx)
F3-32	10'-12'-10' (3.1 m-3.6 m-3.1 m)	38' (11.6 m)	14' (4.3 m)	17,640 lbs (8,100 kg)
F3-36	12'-12'-12' (3.6 m-3.6 m-3.6 m)	40' (12.2 m)	14' (4.3 m)	19,000 lbs (8,618 kg)
F3-42	15'-12'-15' (4.5 m-3.6 m-4.5 m)	45' (13.7 m)	14' (4.3 m)	21,220 lbs (9,625 kg)
F3-46	17'-12'-17' (5.2 m-3.6 m-5.2 m)	47' (14.3 m)	14' (4.3 m)	22,910 lbs (10,391 kg)
F3-52	20'-12'-20' (6.1 m-3.6 m-6.1 m)	50' (15.2 m)	14' (4.3 m)	24,400 lbs (11,067 kg)
F3-40NT	15'-10'-15' (4.5 m-3.1 m-4.5 m)	45' (13.7 m)	11' 6" (3.5 m)	20,600 lbs (9,344 kg)
F3-44NT	17'-10'-17' (5.2 m-3.1 m-5.2 m)	47' (14.3 m)	11' 6" (3.5 m)	22,100 lbs (10,024 kg)
F3-50NT	20'-10'-20' (6.1 m-3.1 m-6.1 m)	50' (15.2 m)	11' 6" (3.5 m)	23,100 lbs (10,478 kg)

SPECIFICATIONS

Large floatation tires on Main Frame and Wings

F3-32 to F3-42 - 11L x 15-8 ply

F3-46 to F3-52 - 12.5L x 15-8 ply

F3-40NT - 11L x 15-8 ply

F3-44NT to F3-50NT - 12.5L x 15-8 ply

FEATURES

Patented **FORWARD™** unfolding system

Auto-fold hydraulic wing lock

Three-section design frame 6" x 4" x 0.250"
(150 mm x 100 mm x 6 mm)

Large diameter drum with premium heavy wall

42" (1070 mm) diameter; 0.50" (13 mm) wall thickness

Taper lock replaceable drum shafts

Light Package, Safety Chains



Floating centre axle allows each wing to float independently. Centre frame lockup is hydraulically controlled.

Telescopic draft arm allows narrow transport, even while turning sharply.



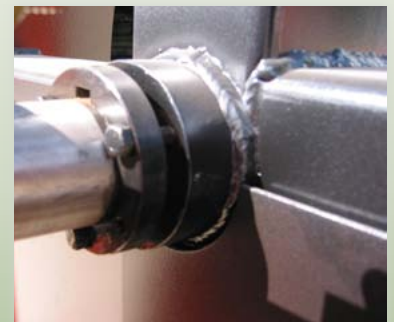
Rite Way Mfg. Co. Ltd.

P.O. Box 26097 Regina, SK S4R 8R7 Canada

www.ritewaymfg.com info@ritewaymfg.com

Ph: 306-337-4440 Toll Free: 1-800-352-8822

Your local dealer:



A bolted end cover allows easy access to the replaceable 2 7/16" shaft if it is ever damaged. This ensures years of operation without needing to replace the entire drum.

We are continuously improving our products. Design, specifications and material are subject to change without notice. Printed in Canada. 1603