



**SWING HITCH ROLLER**  
**SHR-4100**

**OPERATORS MANUAL**  
**& PART LIST**



## Contents

<b>SECTION 1</b>	<b>PAGE</b>
INTRODUCTION & MANUAL INFORMATION	<b>4,5</b>
PRE-DELIVERY INSPECTION / NOTES	<b>6</b>
SPECIFICATIONS	<b>7</b>
SERVICE AND WARRANTY INFORMATION	<b>8,9</b>
SAFETY SUGGESTIONS	<b>10,11</b>
DECAL LOCATIONS	<b>12,13</b>
MAINTENANCE / GREASE LOCATIONS	<b>14,15</b>
OPERATING INSTRUCTIONS	<b>16-18</b>
GRADE CHART	<b>19</b>
TORQUE CHART	<b>20</b>

<b>SECTION 2</b>	<b>PAGE</b>
PARTS	<b>3-19</b>



# **SECTION 1**

## **INTRODUCTION**

***Thank you for making the decision to purchase a RITE WAY product!***

We are pleased to welcome you as an owner of a product from **RITE WAY MFG.** This machinery is the culmination of years of agricultural and engineering experience and has been designed to deliver you with many years of successful operation service.

For the most efficient operation of your **Swing Hitch Roller** we have provided this owner's manual. In this manual we have included proper maintenance and functional procedures to offer maximum longevity for your new equipment. Before operating we urge a careful study of this manual to provide a thorough understanding of your new **Swing Hitch Roller**. We also recommend that you take care of this manual so it will be available for future reference. Should your manual become lost or destroyed a new copy can be obtained from your **Rite Way Manufacturing** dealer. We will also be happy to answer any questions you might have concerning the use or care of this product.

***Rite Way Manufacturing Co. Ltd.***

***P.O. Box 328***

***Imperial, Saskatchewan, Canada***

***S0G 2J0***

***PH: 306-963-2180***

***Fax: 306-963-2660***

***Web Site: [www.ritewaymfg.com](http://www.ritewaymfg.com)***

***Email: [info@ritewaymfg.com](mailto:info@ritewaymfg.com)***

## MANUAL INFORMATION

Unit Model Number	SHR-4100
Manual Revision Number	1.3
Manual Revision Date	Feb. 10, 2020
Manual Serial Number Range	18-41-2357 – Current

The area below is provided for the owner / end-user to make notes regarding the equipment.

### Owner / Equipment Information

Serial Number of Unit	
Date of Purchase	
Dealer Name	
Dealer Address	
Dealer Phone Number	
Salesman Name	
Salesman Phone Number	
Notes	

## PRE-DELIVERY INSPECTION

### GENERAL

- Remove wrapping and wash unit, removing all road debris. (Road salt, mud, snow, etc.)
- Inspect paint, decals and general appearance of unit.
- Verify that the owners manual is in the manual storage tube.
- Verify 'SLOW MOVING VEHICLE' sign (SMV) is on unit
- Verify that jacks are with the unit and function properly.
- Check wheel bolts for proper torque.
- Check for proper tire pressure (PSI).
- Verify that the wheel hubs are lubricated.
- Verify that locking pins and / or ram locks are in place.
- Lubricate all components as per operators manual recommendation.
- Check that all bolts and fasteners are at the proper torque specifications.

**(NOTE: All cap screws that have lock nuts joining moving pieces should not be tightened completely, they must allow movement. i.e. Spring pressure kits, rock shaft connector, draft arm, etc.**

- Check sprocket alignment and chain tension. (If applicable)
- Check locking collars and set screws for proper tension. (If applicable)
- Verify operation of lights. (If applicable)
- Verify the unit moves 'IN' and 'OUT' of transport without any binding.
- Verify that tires are tracking properly when in transport mode.

### HYDRAULICS

- Insure that all hydraulic hoses and lines are routed properly and secured.
- Verify that all hydraulic fittings / hoses are secure and there are no oil leaks.
- Inspect all cylinders for leakage and the cylinder shaft for rust, pits, or scratches.
- Verify operation of all hydraulic functions - Cycle hydraulic cylinders to remove air from the system.

### DELIVERY

- Verify that 'The customer is aware of warning decals and proper jack placement for transport.'
- Verify that 'The customer is aware of proper operation and transportation of the unit'.
- Verify that 'The customer has received an operators manual'.
- Explain all maintenance and service intervals to the customer (From operators manual).
- Advise the customer of grease zerk locations and maintenance schedules.
- Level the unit per operators manual and instruct the customer on the proper procedures.
- Level the unit per operators manual and instruct the customer on the proper procedures.

Pre-delivery Inspection Completed By (Sign Below)

Pre-delivery Inspection Confirmed By (Sign Below)



## **SPECIFICATIONS**

### **Standard Equipment:**

- Multi-position Hydraulic Swing Hitch
- Adjustable hitch height c/w perfect hitch clevis
- Over-center wing lockups
- Triple Lip Seal Bearings
- Large diameter drum with premium heavy wall:
  - 42" diameter; 0.50" wall thickness (1067mm x 13mm)
- Heavy Duty Frame
  - 8" x 4" x 0.250" (200 mm x 100 mm x 6 mm)
- Taper lock replaceable drum shafts
- Safety Chains
- Light Package

### **Optional Equipment:**

- Acre Meter
- Mud Scraper Kit

<b><i>Weight</i></b>	<i>8,000 lbs. / 3,630 kg</i>
<b><i>Transport Width and Length</i></b>	<i>Width of 7'-7" / 3.31 m Length of 26'-5" / 8.34 m</i>
<b><i>Working Width and Length</i></b>	<i>Width of 20'-00" / 6.0 m Length of 18'-8-1/2" / 5.71 m</i>
<b><i>Tires</i></b>	<i>12.5L x 15 D</i>
<b><i>Hitch</i></b>	<i>Multi-Position, Hydraulic Swing, Perfect Hitch</i>

## **SERVICE & WARRANTY POLICY**

Rite Way Manufacturing Co. Ltd. (hereafter referred to as Rite Way) warrants each new machine to be free from defects in materials and workmanship for a period of one (1) year from date of purchase under normal agricultural use and service. In addition, Rite Way will supply at no charge, (F.O.B Rite Way Factory) any part that has failed within the 2nd year. Rite Way's obligation under this warranty is limited to the repair or replacement of any defective parts of the equipment at its own discretion.

**Any** alterations, modifications or additions done to a finished product will **void this warranty** unless prior written permission from Rite Way is obtained.

Items that are not manufactured by Rite Way are covered by the warranty of the supplier of these items. We will therefore extend, without assuming any responsibility, any warranty given to us by our suppliers.

This warranty shall-not apply to any machine, that in the company's judgment has be subjected to misuse, negligence or accident. In no event shall the owner be entitled to recover costs for incidental, special or consequential damages such as, but not limited to; Loss of crop, loss of profit or revenue, other commercial losses, inconvenience or rental costs.

This warranty shall not apply unless Rite Way or its designated dealer is promptly notified of claimed defects and the allegedly defective part is held for inspection.

Repair parts purchased for machines 'Out of Warranty', are warranted to be free from defects in material and workmanship under normal use and service for a period of ninety (90) days from the date of delivery to the customer.

The warranty shall only become valid when delivery notification for warranty is received by Rite Way within 20 days of the completion of sale.

**OWNER'S / USERS OBLIGATION:** It is the responsibility of the user to read the Operators Manual and understand the safe and correct operating procedures as it pertains to the operation of the product, and to lubricate and maintain the product according to the maintenance schedule in the Manual.

The user is responsible for inspecting the machine, and for having parts repaired or replaced when continued use of the product could cause damage or excessive wear to any other parts. It is the user's responsibility to deliver their machine to a Rite Way dealer for service or replacement of defective parts which are covered by the standard warranty.

Rite Way **will not** by held responsible for charges such as transportation, fuel, lodging when a dealer / dealer representative travels to a customer location for warranty or inspection.

## **SERVICE & WARRANTY CLAIM PROCEDURE**

1. All claims must be handled through a dealer / distributor. All claims must be submitted on a properly completed claim form within 30 days of the date of repair.
2. A warranty registration claim form must be on file at Rite Way Mfg. to validate a warranty claim.
3. Defective parts are to be held at the dealer / distributor's place of business until the warranty claim form has been processed. Rite Way will advise when parts can be released.
4. Parts that require inspection by Rite Way personnel must be accompanied by a Return Goods Form number, and must be sent by pre-paid freight. Rite Way will refund pre-paid freight charges on any items determined to be defective.
5. Rite Way will not assume responsibility for repairs or expenses incurred without authorization. Warranty labour in excess of \$150.00 must be authorized before such work is performed and photographs before and after repairs are required.
6. Warranty labour is to be claimed on the warranty claim form, only if the warranty labour was performed by the dealer. Travel time is not covered by warranty and should not be included. Rite Way reserves the right to adjust or allocate labour times and values based on its experience.
7. It is the responsibility of the dealer to ensure that the warranty registration forms are properly completed and returned to Rite Way Mfg., Imperial, SK.

## **SAFETY RECCOMENDATIONS**

1. Read the manual thoroughly and understand before operating or working on the machine.
2. Study all safety and warning decals on the implement.
3. Most accidents occur because of neglect or carelessness.
4. Do not allow riders on the tractor or implement during operation.
5. Do not allow children on or near the machine.
6. Connect the implement hitch to the tractor before operating the hydraulic system.

**NOTE: Be aware of any hydraulic leaks.**

7. Always throttle the tractor down and use caution when connecting the implement to the tractor hitch.

**NOTE: Never stand between the tractor and implement.**

8. Lower the hitch jack onto firm ground and chock the tires when unhooking implement from tractor.

**NOTE: Ensure the unit is on level ground prior to unhooking tractor.**

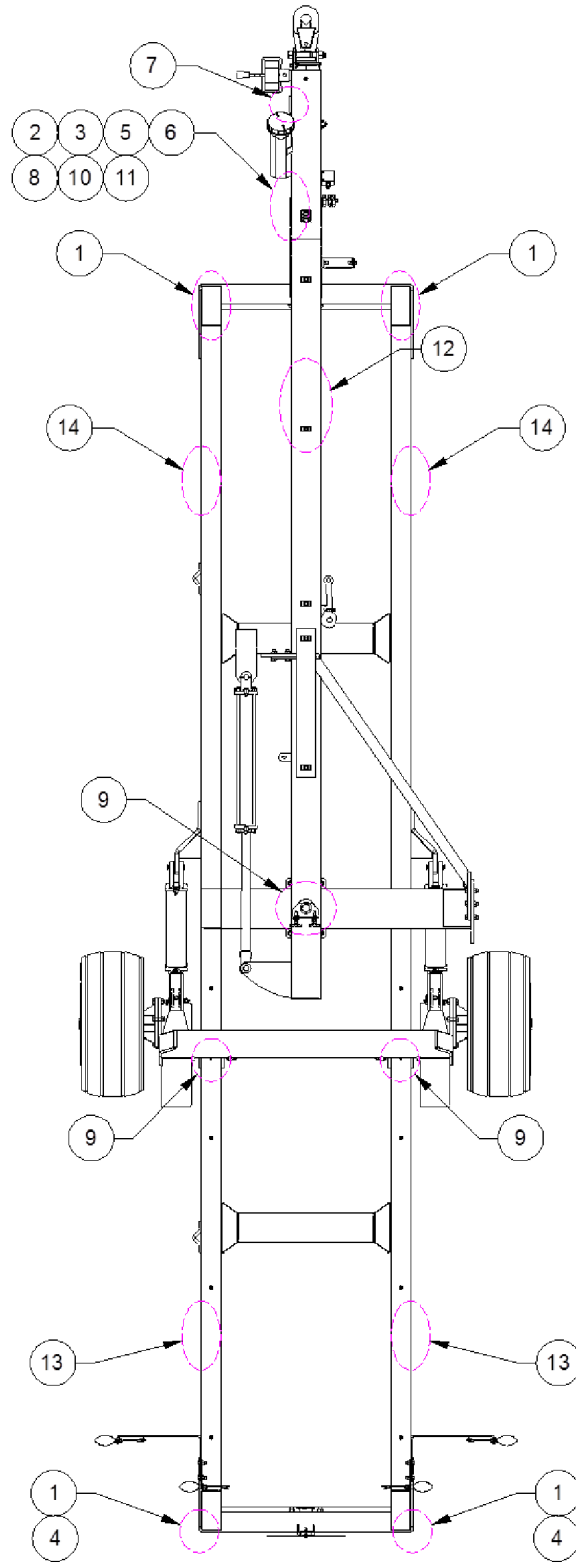
9. Exercise extra caution when working on hillsides or near ditches.
10. Ensure that the tractor draw-bar is pinned during transport.
11. Maximum speed while transporting the unit is 18 mph (29 km).
12. Do not work on this machine when hydraulic system is under pressure.
13. Observe all laws and regulations when transporting unit on public roads.
14. Do not transport this machine on public roads unless all safety & maintenance checks have been completed.
15. Ensure that safety chains are secured prior to transporting.

**This machine will provide years of trouble-free & safe operation IF all maintenance and safety instructions are followed.**

**NOTES**

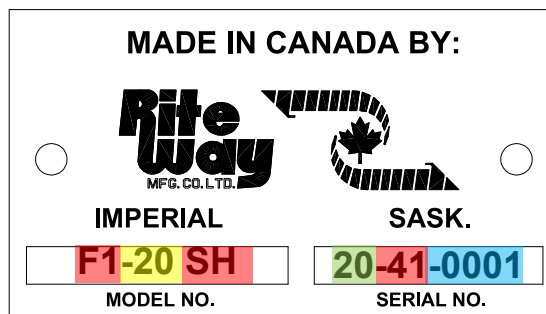
Large empty rectangular box for notes.

**DECAL LOCATIONS**



# DECAL LOCATIONS

Item #	Part #	Description	Qty
1	060-0009	<b>Amber</b> - Reflector (3 x 2)	8
2	060-0011	<b>Caution</b> - escaping fluid hazard, escaping hydraulic ....	1
3	060-0015	<b>Important</b> - Block wheels before Unhooking	1
4	060-0022	<b>Red</b> - Reflector (3 x 2)	2
5	060-0028	<b>Warning</b> - Lower or Block Elevated Components ....	1
6	060-0029	<b>Warning</b> - Stand Clear Of Hitch Tongue When Unhooking....	1
7	060-0034	<b>Riteway</b> Serial Number Plate	1
8	060-0038	<b>Attention</b> - Ensure That All Cylinder Shafts Are Retracted	1
9	060-0046	<b>Grease</b> - Every 8 Hours	3
10	060-0061	<b>Important</b> - Hydraulic Hose Application (three colours)	1
11	060-0067	<b>Warning</b> - Check and Tighten Hub and Wheel Bolts	1
12	060-0121	<b>Riteway</b> Mfg. (Large)	2
13	060-0083	<b>4100</b> - White	1
14	060-0122	<b>Riteway</b> Mfg. (Small Decal, 9 x 4 - White)	2



**UNIT SERIES**  
**UNIT SIZE**  
**MODEL YEAR**  
**UNIT NUMBER**

## **MAINTANENCE**

### **GENERAL**

- Repack the wheel hubs after the first 500 travel miles; then yearly thereafter.
- Visually inspect the wheel bolts for tightness each day. Riteway torque recommendation to 110 ft - lbs after the first few hours of operation and frequently there after, (manufactures torque recommendations 90 to 131 ft - lbs).
- Requires 3-1/2 to 4-1/2 HP per foot.

### **EVERY 8 HOURS (DAILY)**

- Grease all pins and knuckles. (See page 15 for detailed diagram).

### **EVERY 100 HOURS (MONTHLY)**

- Visually inspect hydraulic hoses & fittings for leaks or damage.
- Inspect lighting system and electrical harness for damage

### **ANNUALLY**

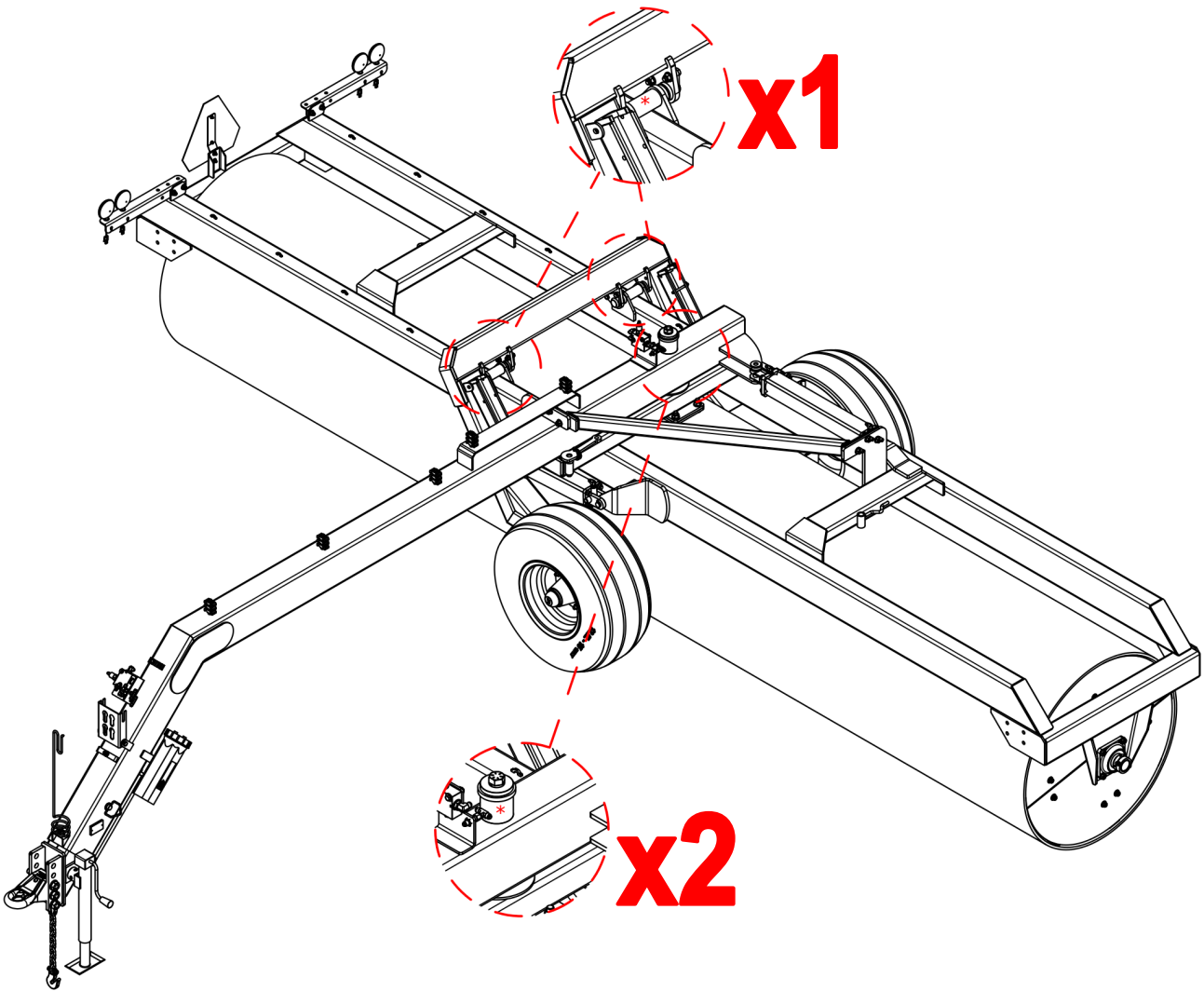
- Inspect wheel bearings / hubs and grease.
- Check wheel bolts and re-torque.
- Check tire pressure, follow tire manufactures inflation recommendations.
- Visually inspect unit for loose, worn or damaged components.

### **STORAGE**

- Coat any exposed cylinder shafts with thick oil or grease.
- Ensure that parking jacks are situated on firm ground.
- **NOTE: If jack pads sink into ground, it will be difficult to hook up unit.**
- Lock all applicable safety pins into place.



**MAINTENANCE – GREASE LOCATIONS**



## **OPERATING INSTRUCTIONS**

### **GENERAL INFORMATION**

**NOTE:** Always choose a level area when raising and lowering unit into or from transport position.

**NOTE:** Lubricate all pins, axles and bearings regularly to prevent premature failure of components.

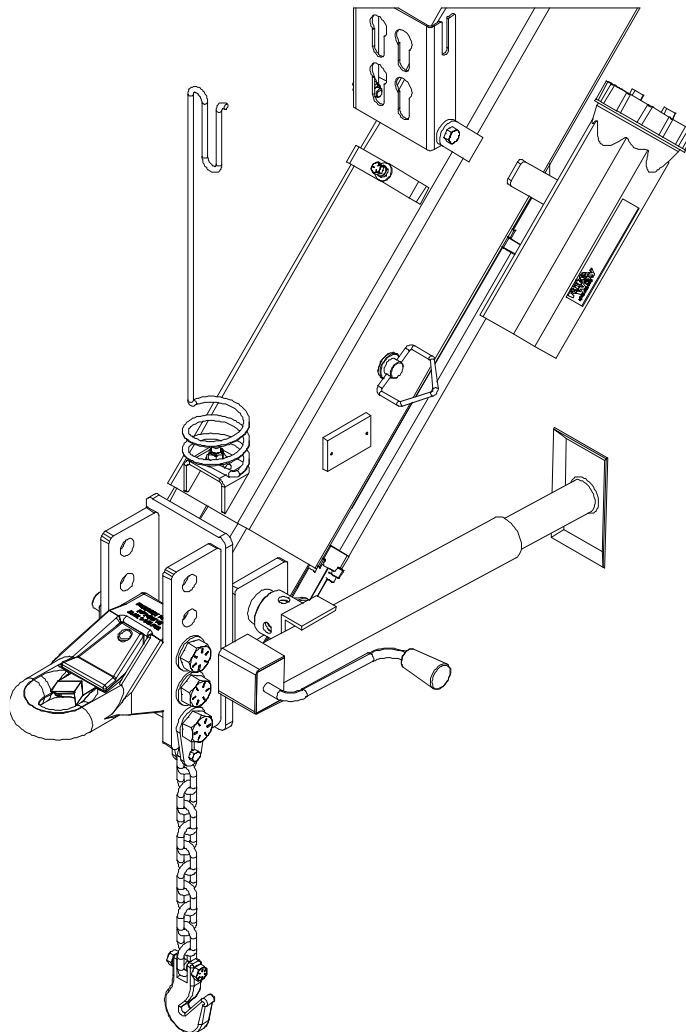
### **TRACTOR HOOK-UP**

- Move tractor into position where pin can be dropped in place through draw bar hitch

**NOTE:** Use a clevis type tractor hitch with a retained type of hitch pin.

- Retract parking jack and secure in transport position prior to moving machine

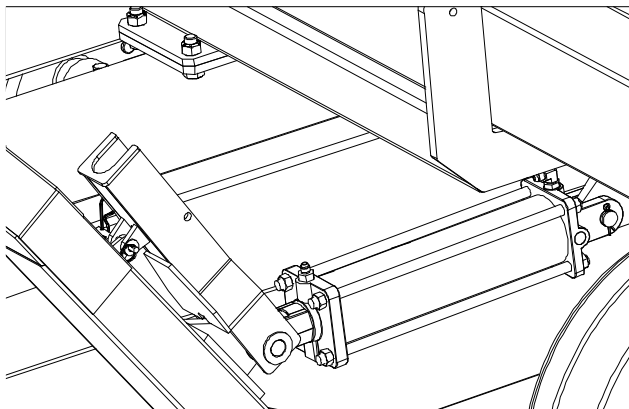
**NOTE:** Ensure that parking jack handle is secured by chain prior to moving the machine (Failure to do so will destroy the jack handle).



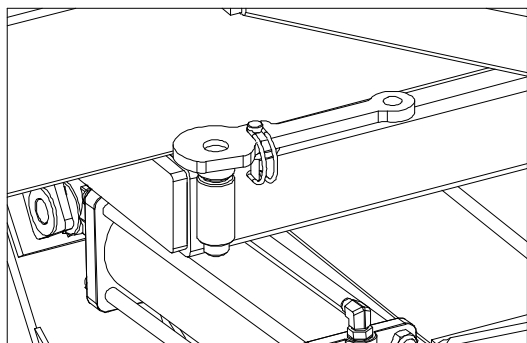
# OPERATING INSTRUCTIONS

## TRANSPORT TO FIELD POSITION

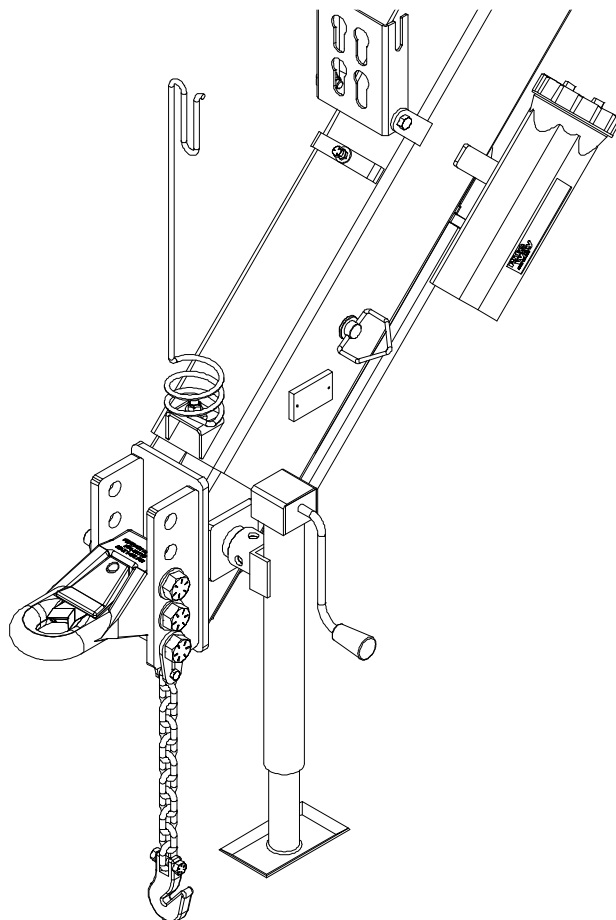
1. Park on level ground.
2. Remove each transport frame hydraulic cylinder lock up and pin into position.
3. Remove the swing hitch lock pin.
4. Remove tongue extension lock pin.
5. **FROM INSIDE THE TRACTOR**, lower the unit until the drum and frame are parallel to the ground and just off the ground surface.
6. Use the hydraulic swing to rotate roller 90°, and then lock it with swing hitch lock pin.
7. Raise the transport frame completely.
8. Lock tongue with tongue extension lock pin.
9. Begin rolling in field position.



**Transport frame hydraulic cylinder lock up**



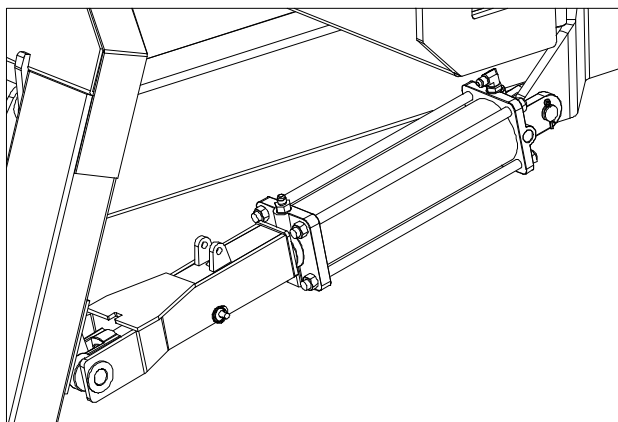
**Swing hitch lock pin**



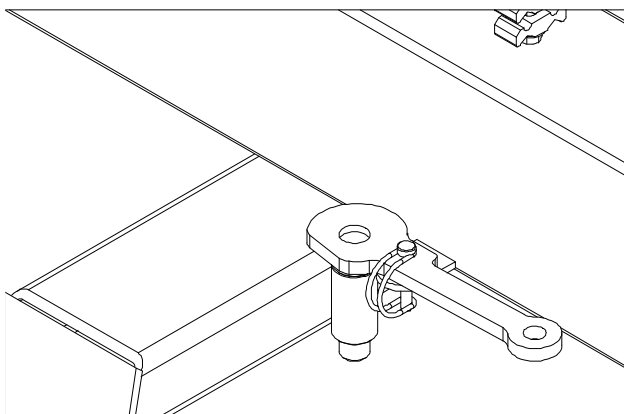
## OPERATING INSTRUCTIONS

### FIELD TO TRANSPORT POSITION

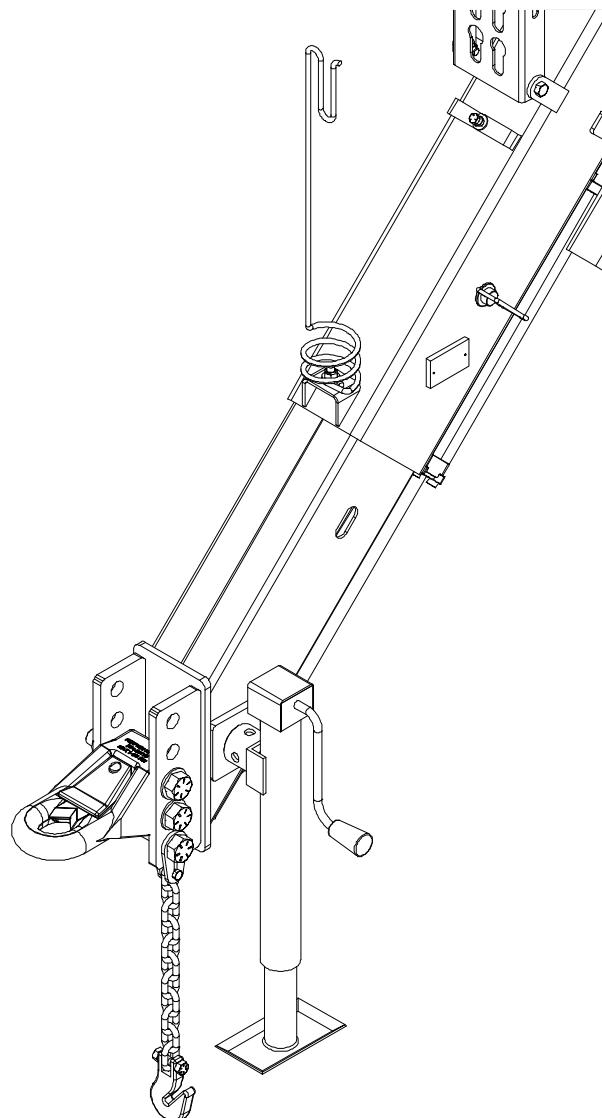
1. **STOP** the tractor before trying to lift up the **LAND ROLLER**
2. Remove the tongue extension lock pin and swing hitch lock pin.
3. Lift the unit slowly just off the ground.
4. Swing the roller into transportation position.
5. Extend the transport frame cylinders completely.
6. Place each transport frame cylinder lock up in place.
7. Place the swing hitch lock pin back and pin.
8. Place tongue extension lock pin.
9. Unit is now ready for transportation.



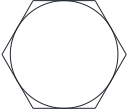
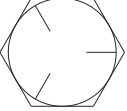
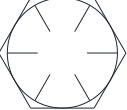
Transport frame hydraulic cylinder lock up



Swing hitch lock pin



**FASTENER GRADE CHART**

Specification	Material	Size Range (inches)	Min. Proof Strength (psi)	Min. Tensile Strength (psi)	Min. Yield Strength (psi)	Grade Identification Marking
Grade 2	Low or Medium Carbon Steel	1/4 to 3/4 7/8 to 1-1/2	55,000 33,000	74,000 60,000	57,000 36,000	
Grade 5	Medium Carbon Steel: Quenched and Tempered	1/4 to 1 1-1/8 to 1-1/2	85,000 74,000	120,000 105,000	92,000 81,000	
Grade 8	Medium Carbon Alloy Steel: Quenched and Tempered	1/4 to 1-1/2	120,000	150,000	130,000	

# FASTENER TORQUE CHART

Nominal Thread Size	Grade 2		Grade 5		Grade 8	
	Clamping Load	Tightening Torque	Clamping Load	Tightening Torque	Clamping Load	Tightening Torque
<b>Coarse Thread</b>						
<b>1/4-20</b>	1,300 lbs	65 in-lbs	2,000 lbs	100 in-lbs	2,850 lbs	143 in-lbs
<b>5/16-18</b>	2,150 lbs	134 in-lbs	3,350 lbs	210 in-lbs	4,700 lbs	305 in-lbs
<b>3/8-16</b>	3,200 lbs	20 ft-lbs	4,950 lbs	31 ft-lbs	6,950 lbs	44 ft-lbs
<b>7/16-14</b>	4,400 lbs	30 ft-lbs	6,800 lbs	50 ft-lbs	9,600 lbs	70 ft-lbs
<b>1/2-13</b>	5,850 lbs	49 ft-lbs	9,050 lbs	75 ft-lbs	12,800 lbs	107 ft-lbs
<b>9/16-12</b>	7,500 lbs	70 ft-lbs	11,600 lbs	109 ft-lbs	16,400 lbs	154 ft-lbs
<b>5/8-11</b>	9,300 lbs	97 ft-lbs	14,500 lbs	151 ft-lbs	20,300 lbs	211 ft-lbs
<b>3/4-10</b>	13,800 lbs	173 ft-lbs	21,300 lbs	266 ft-lbs	30,100 lbs	376 ft-lbs
<b>7/8-9</b>	11,425 lbs	166 ft-lbs	29,435 lbs	430 ft-lbs	41,550 lbs	606 ft-lbs
<b>1-8</b>	15,000 lbs	250 ft-lbs	38,600 lbs	640 ft-lbs	54,540 lbs	900 ft-lbs
<b>Fine Thread</b>						
<b>1/4-28</b>	1,500 lbs	75 in-lbs	2,300 lbs	115 in-lbs	3,250 lbs	163 in-lbs
<b>5/16-24</b>	2,400 lbs	150 in-lbs	3,700 lbs	230 in-lbs	5,200 lbs	325 in-lbs
<b>3/8-24</b>	3,600 lbs	23 ft-lbs	5,600 lbs	35 ft-lbs	7,900 lbs	50 ft-lbs
<b>7/16-20</b>	4,900 lbs	36 ft-lbs	7,550 lbs	55 ft-lbs	10,700 lbs	78 ft-lbs
<b>1/2-20</b>	6,600 lbs	55 ft-lbs	10,200 lbs	85 ft-lbs	14,400 lbs	120 ft-lbs
<b>9/16-18</b>	8,400 lbs	79 ft-lbs	13,000 lbs	112 ft-lbs	18,300 lbs	172 ft-lbs
<b>5/8-18</b>	10,600 lbs	110 ft-lbs	16,300 lbs	170 ft-lbs	23,000 lbs	240 ft-lbs
<b>3/4-16</b>	15,400 lbs	193 ft-lbs	23,800 lbs	298 ft-lbs	33,600 lbs	420 ft-lbs
<b>7/8-14</b>	12,610 lbs	184 ft-lbs	32,480 lbs	473 ft-lbs	45,855 lbs	668 ft-lbs

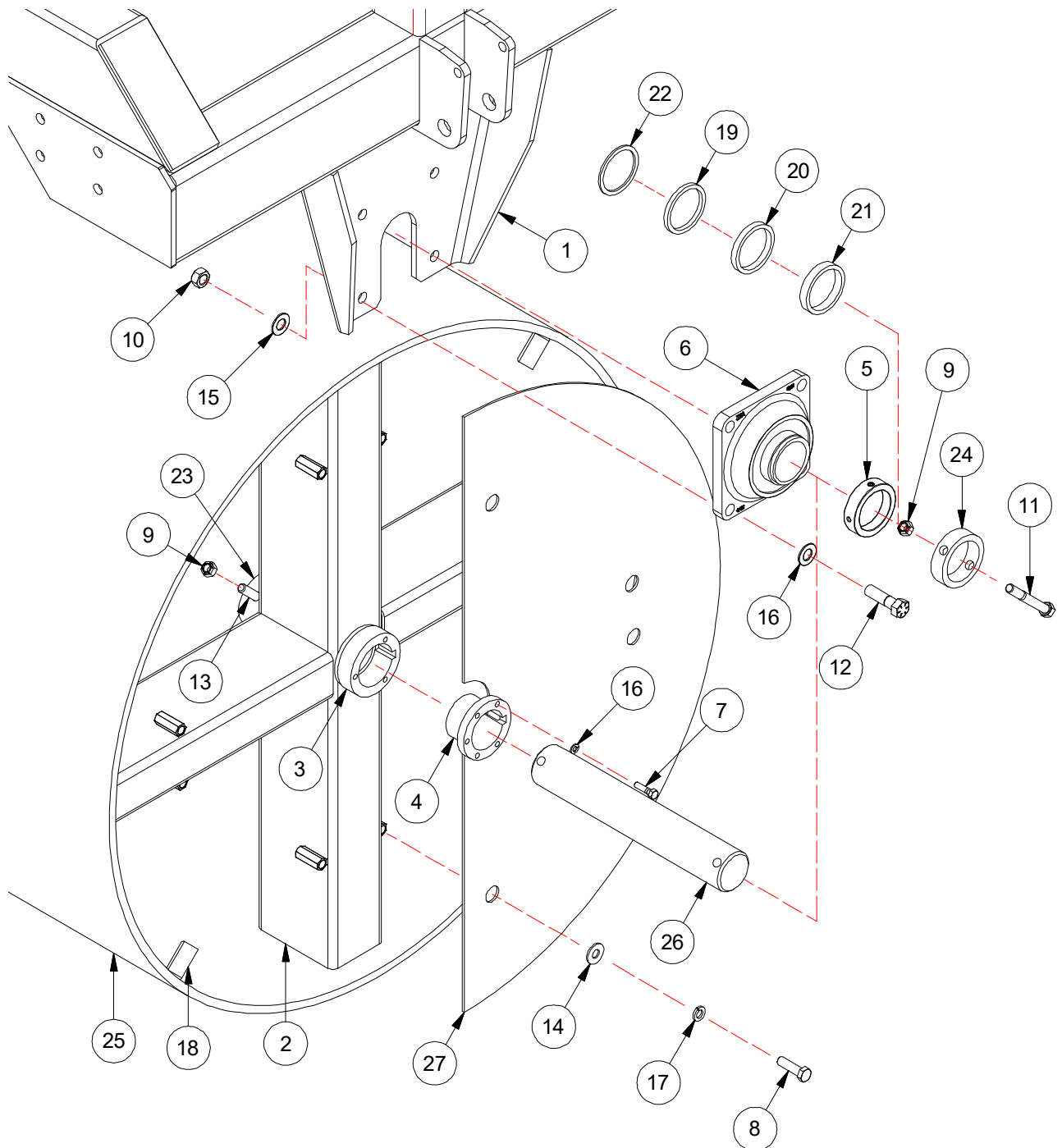
**NOTES**





# **SECTION 2**

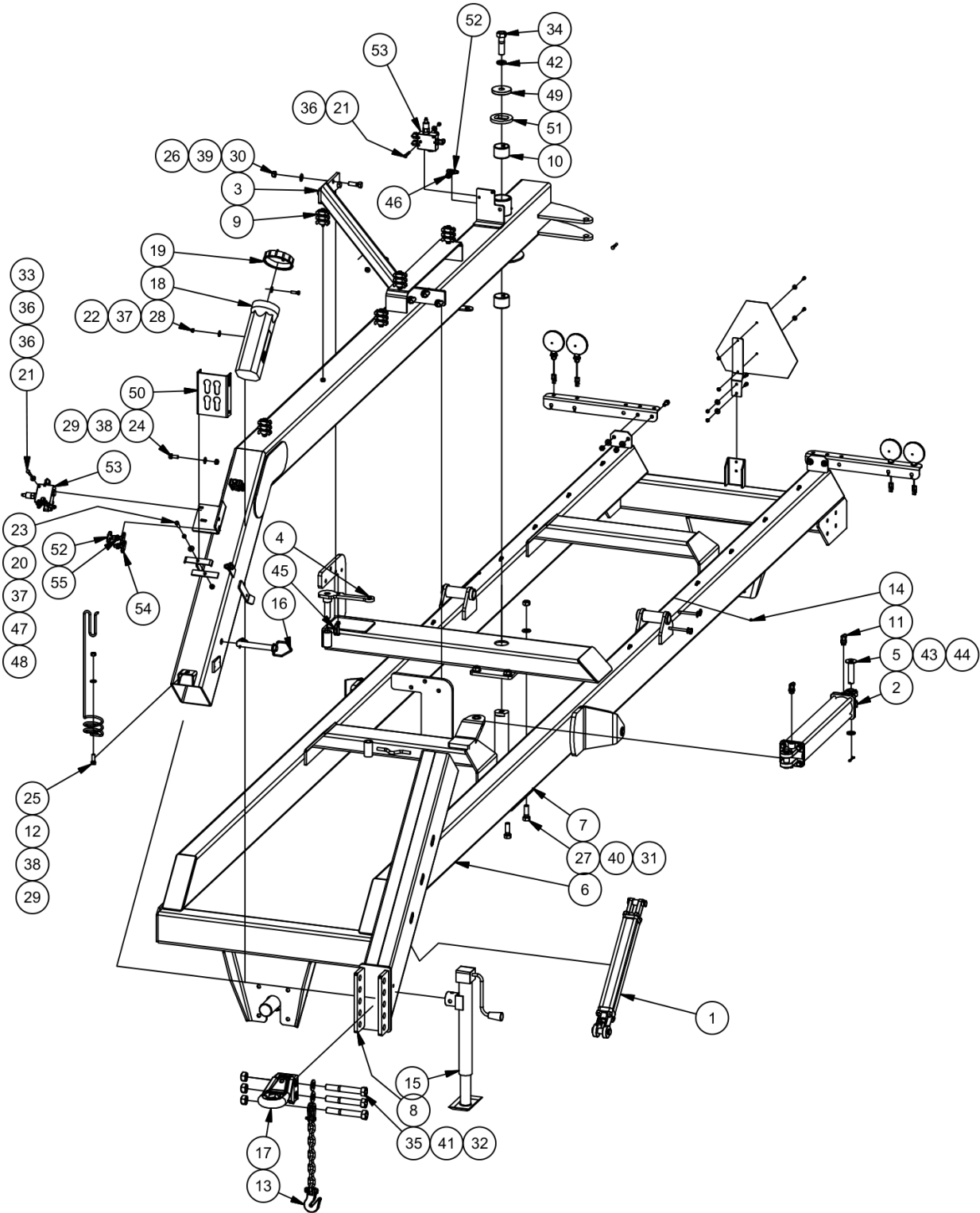
**PARTS DETAILS – DRUM ASS'Y**



## PARTS DETAILS – DRUM ASS'Y

ITEM #	PART #	DESCRIPTION
1	105-0239	Main Frame Weldment
2	112-0530	Offset Drum Cross c/w Coupling Nuts
3	200-9002	Weld On Bushing
4	261-6001	Ø3-11/16" x 1-5/16" Split Tapered Bearing
5	292-4018	Ø2-7/16" Eccentric Lock Collar, Pltd.
6	292-4022	Ø2-7/16" ID 4-Bolt Flange Bearing
7	525-0510	5/16" x 1-1/4" Capscrew, NC, Gr.5, Pltd.
8	526-0815	1/2" x 1-3/4" Capscrew, NC, Gr.5, Pltd.
9	526-6105	1/2" Stover Lock Nut, NC, Gr.5, Pltd.
10	526-7610	5/8" Stover Lock Nut, <b>NF</b> , Gr.8, Pltd.
11	530-0754	1/2" x 4" Capscrew, NC, Gr.8, Pltd.
12	538-1018	5/8" x 2-1/4" Capscrew, <b>NF</b> , Gr.8, Pltd.
13	540-0836	1/2" x 4-1/2" Socket Head Capscrew, NC, Gr.5, Black
14	550-5208	1/2" Flat Washer, Pltd.
15	550-5617	5/8" SAE Flat Washer, Gr.8 (F436), Pltd.
16	551-4905	5/16" Spring Lock Washer. Black
17	551-5008	1/2" Spring Lock Washer, Pltd.
18	802-2047	Drum Cross Mount Angle
19	805-7041	Spacer, Ø OD x .240w CDSM - 1/8"
23	825-0260	Back Bushing
24	805-8023	Offset Drum Collar, Ø3-1/4" OD x .375w CDSM - 7/8"
25	105-0115	20ft Land Roller Drum Weldment
26	827-0017	Replaceable Drum Shaft Ø2-7/16" OD x 14-3/4"
27	835-1044	1/2 Section Drum End Cap

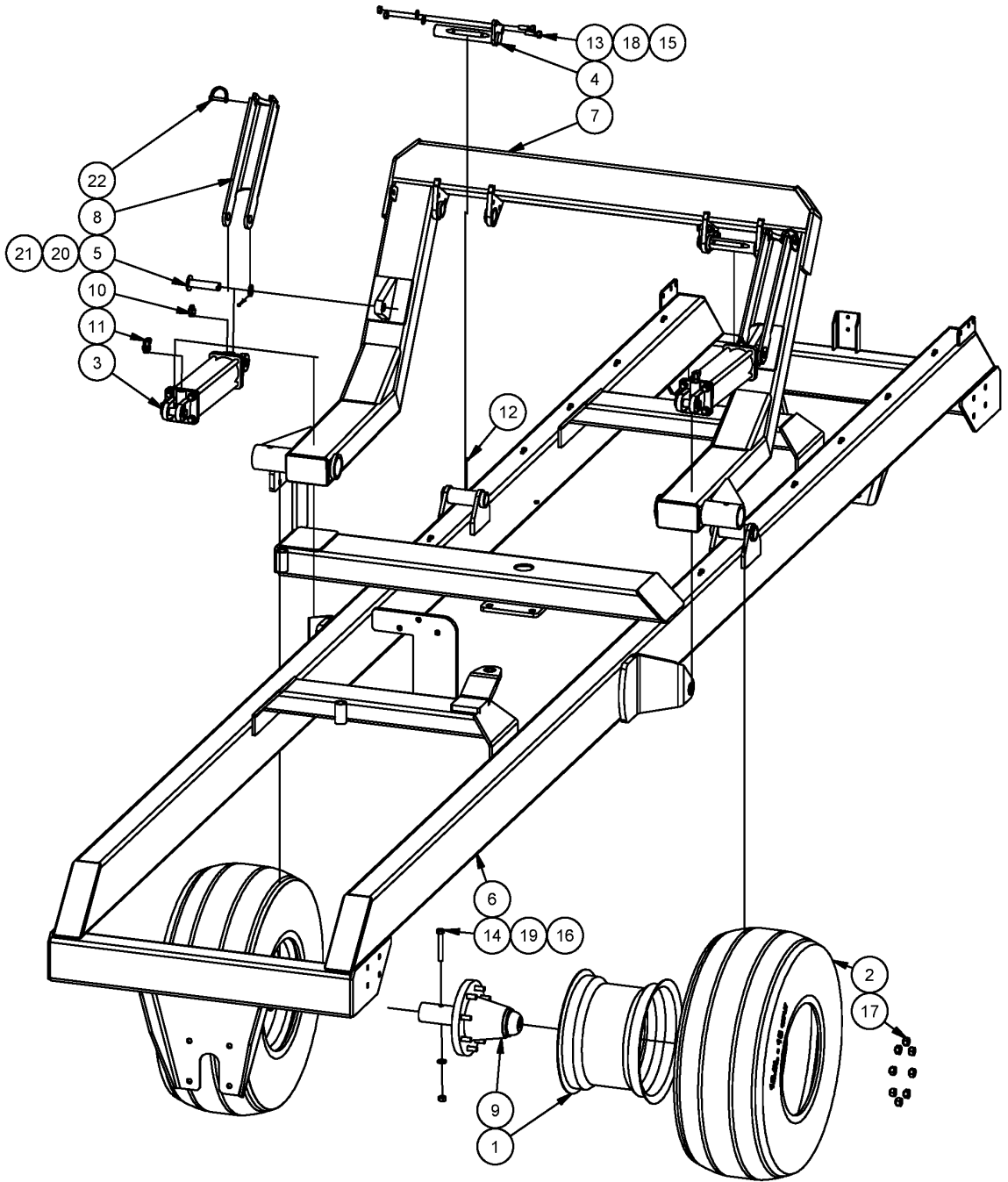
# PARTS DETAILS – FRAME & HITCH



## PARTS DETAILS – FRAME & HITCH

Item #	Part #	Description
1	030-5972	MONARCH CYLINDER, 20TC16-112, ORDER NUMBER: 648683, 3/4" ORB PORT 90 DEG, C/WITH 2 CYL. PINS
2	030-5982	3-1/2 X 24 CYLINDER, 1-3/4 SHAFT, MONARCH-3/4" ORB PORTS INLINE, C/WITH 2 CYL. PINS O/N 671642 S/N 35THC24-175
3	105-0195	CROSS MEMBER SUB-WELDMENT
4	105-0204	SAFETY HANDLE WELDMENT
5	105-0238	PIN SUB-WELDMENT FOR HYD CYLINDER
6	105-0239	MAIN FRAME WELDMENT
7	105-1132	HITCH ARM PIVOT WELDMENT
8	105-1134	SLIDING HITCH WLDT, HITCH, SHR
9	160-0075	HYDRAULIC CLAMP, 4 - 3/8" HOSE, PLASTIC & STEEL, FOR WELDED NUT
10	261-5100	STEEL SPRING BUSHING, 2-3/4" OD x 0.121w, 2" LONG
11	319-5710	1/2" ORB MALE x 3/8" JIC MALE - 90 DEGREE ELBOW
12	407-0003	24" SHEPHERD HOOK HOSE STANDOFF
13	409-9050	SAFETY CHAIN 20,000LB, CLEVIS MOUNT, NEW STYLE
14	419-0004	GREASE ZERK, 1/4"NF - STRAIGHT
15	420-0145	20" SIDE WINDER 3000 lb PARKING JACK
16	422-0019	1" HITCH PIN-FOLDOVER HANDLE WITH CHAIN, 6-1/4" USALBE LG.
17	423-0001	PP1-301VH PERFECT HITCH c/w PP1-301VH
18	426-0001	MANUAL STORAGE TUBE
19	426-0002	MANUAL STORAGE TUBE CAP
20	525-6106	NUT, JAM, HEX, INCH, GRADE 5, YELLOW ZINC PLATED
21	526-0516	BOLT, 5/16-18 UNC - 2, GR.5, YELLOW ZINC PLATED
22	526-0610	BOLT, 3/8-16 UNC - 1.25, GR.5, YELLOW ZINC PLATED
23	526-0613	BOLT, 3/8-16 UNC - 1.5, GR.5, FULL THREAD, YELLOW ZINC PLATED
24	526-0810	BOLT, 1/2-13 UNC - 1.25, GR.5, YELLOW ZINC PLATED
25	526-0812	BOLT, 1/2-13 UNC - 1.5, GR.5, YELLOW ZINC PLATED
26	526-1016	BOLT, 5/8-11 UNC - 2, GR.5, YELLOW ZINC PLATED
27	526-1218	BOLT, 3/4-10 UNC - 2.25, GR.5, YELLOW ZINC PLATED
28	526-6103	NUT, STOVER LOCK, 3/8-16 UNC, GR.5, YELLOW ZINC PLATED
29	526-6105	NUT, STOVER LOCK, 1/2-13 UNC, GR.5, YELLOW ZINC PLATED
30	526-6106	NUT, STOVER LOCK, 5/8-11 UNC, GR.5, YELLOW ZINC PLATED
31	526-6107	NUT, STOVER LOCK, 3/4-10 UNC, GR.5, YELLOW ZINC PLATED
32	526-6109	NUT, STOVER LOCK, 1-8 UNC, GR.5, YELLOW ZINC PLATED
33	526-6111	NUT, STOVER LOCK, 5/16-18 UNC, GR.5, YELLOW ZINC PLATED
34	530-1637	BOLT, 1-8 UNC - 3.5, GR.8, YELLOW ZINC PLATED
35	530-1669	BOLT, 1-8 UNC - 7, GR.8, YELLOW ZINC PLATED
36	550-5205	WASHER, FLAT, 5/16 - Regular - Type B, GR.5, YELLOW ZINC PLATED
37	550-5206	WASHER, INCH, YELLOW ZINC PLATED
38	550-5308	WASHER, FLAT, 1/2" - SAE, GR.5, YELLOW ZINC PLATED
39	550-5310	WASHER, FLAT, 5/8" - SAE, GR.5, YELLOW ZINC PLATED
40	550-5312	WASHER, FLAT, 3/4" - SAE, GR.5, YELLOW ZINC PLATED
41	550-5316	WASHER, FLAT, 1" - SAE, GR.5, YELLOW ZINC PLATED
42	551-5016	WASHER, SPRING, INCH, YELLOW ZINC PLATED
43	554-5404	BUSHING, MACHINERY, 1" OD, 10 GA, YZP
44	556-0906	COTTER PIN, 3/16 x 1 3/4 Extended Prong Square Cut Type, ZINC PLATED
45	560-0510	5/16 X 1-3/4 CLEVIS PIN c/w SPRING LOCK, PLTD.
46	650-0418	FITTING, HYD - #6 MJIC TO #6 MJIC STR BULKHEAD, STEEL
47	811-1020	5" HOSE CLAMP
48	811-1021	5" BACKING PLATE
49	827-0026	SPACER PLATE, CYLINDER HOSE BRACKET WLDT
50	835-1011	TIP & CHAIN HOLDER Small
51	839-1807	HITCH RETAINING WASHER, DD
52	6mj_6mj_6fx	FITTING, 6mj_6mj_6fx
53	710-5017 body	Reducing Valve with Reverse Flow
54	6WJTX-WLN-S (10.7) _part1	WJTX EO Part1-Bulkhead branch tee
55	Triple-Lok Bulkhead locknut 6WLNMS	WLN Triple-Lok-Bulkhead locknut

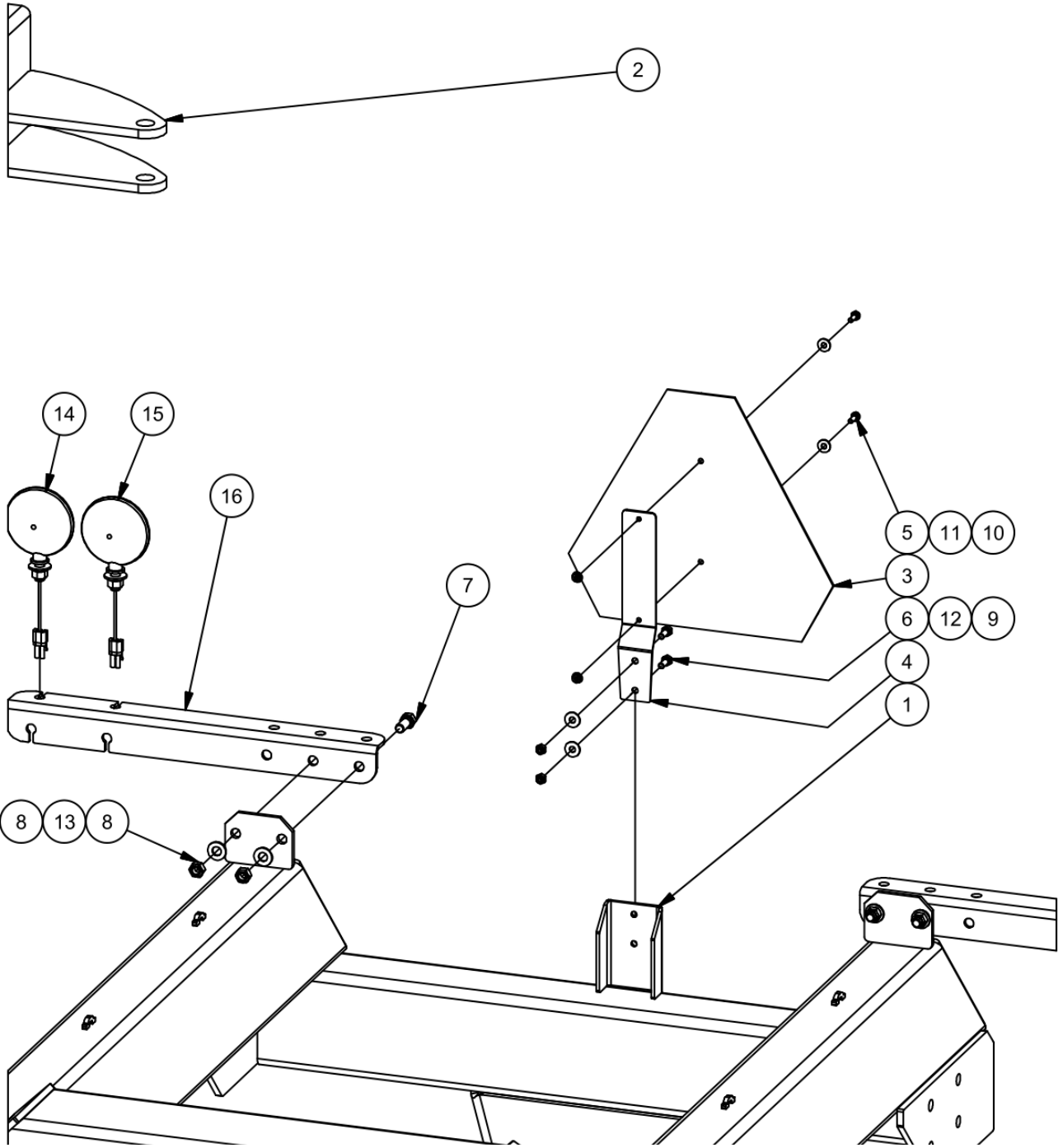
# PARTS DETAILS – TRANSPORT FRAME



## PARTS DETAILS – TRANSPORT FRAME

ITEM #	PART #	DESCRIPTION
1	204-5586	Rim, 12.5L-15, 15 x 10 x 8 Bolt
2	205-1193	Tire, 12.5L-15, Load Range D
*	020-0108	Tire and Rim Assembly, 12.5L-15 D
3	030-5981	3-1/2 X 14 Hydraulic Cylinder, 3/4 ORB
4	105-0078	Pin Weldment, Common, Bolt Top, YZP
5	105-0238	Pin Sub-Weldment For Hyd Cylinder
6	105-0239	Main Frame Weldment
7	105-1127	Transport Frame
8	105-1137	Transport Cylinder Lockup
9	120-1246	812 Spindle & Hub Assembly 2-1/2" X 11-3/4" O.A.
10	316-0302	1/2" ORB Male X 3/8" JIC Male-Adaptor
11	319-5710	1/2" ORB Male X 3/8" JIC Male - 90 Degree Elbow
12	419-0004	Grease Zerk, 1/4"NF - Straight
13	526-0814	Bolt, 1/2-13 UNC - 1.75, Gr.5, Yellow Zinc Plated
14	526-0932	Bolt, 9/16-12 UNC - 4, Gr.5, Yellow Zinc Plated
15	526-6105	Nut, Stover Lock, 1/2-13 UNC, Gr.5, Yellow Zinc Plated
16	526-6112	Nut, Stover Lock, 9/16-12 UNC, Gr.5, Yellow Zinc Plated
17	543-5563	9/16 Wheel Nut, Nf, Gr.5, Pltd.
18	550-5308	Washer, Flat, 1/2" - SAE, Gr.5, Yellow Zinc Plated
19	550-5309	Washer, Flat, 9/16" - SAE, Gr.5, Yellow Zinc Plated
20	554-5404	Bushing, Machinery, 1" Od, 10 Ga, YZP
21	556-0906	Cotter Pin, 3/16 X 1 3/4 Extended Prong Square Cut Type, Zinc Plated
22	560-0510	5/16 X 1-3/4 Clevis Pin C/W Spring Lock, Pltd.

**PARTS DETAILS – SMS & LIGHTS**

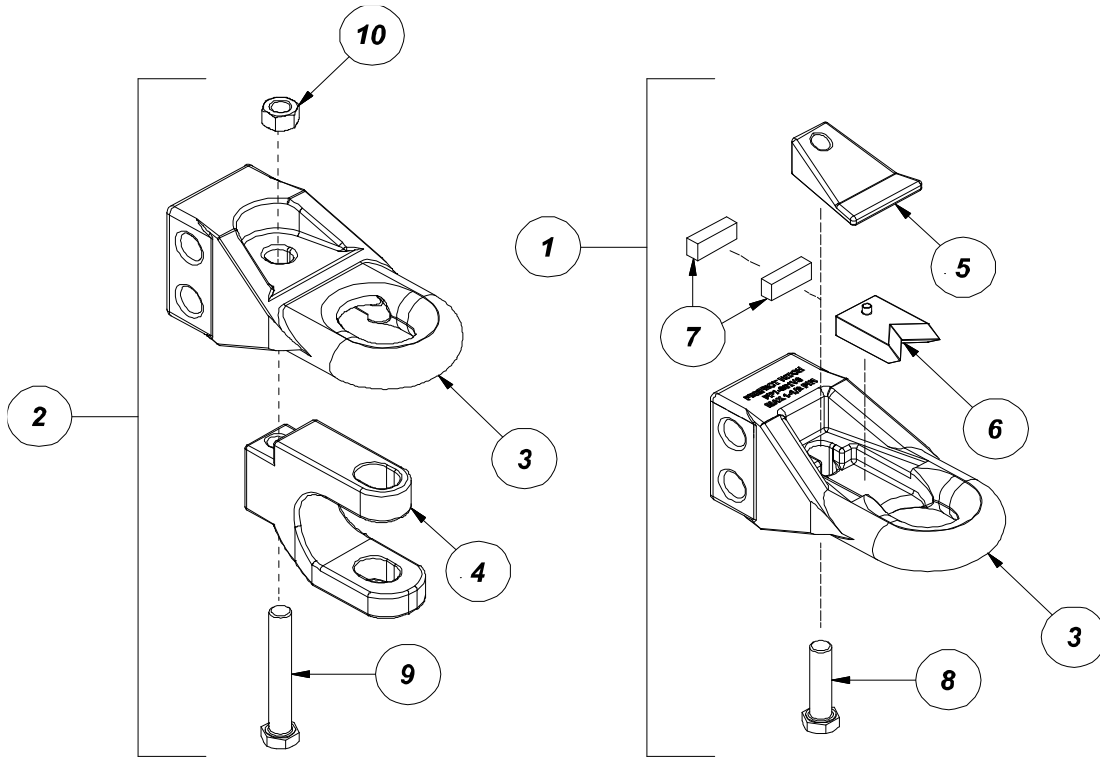




## PARTS DETAILS – SMS & LIGHTS

ITEM #	PART #	DESCRIPTION
*	040-0048	Light Kit, Swing Hitch Roller (Not Shown)
1	105-0239	MAIN FRAME WELDMENT
2	105-1133	HITCH ARM WELDMENT
3	424-0001	SLOW MOVING SIGN (SMV)
4	424-0002	SLOW MOVING SIGN SPADE
5	526-0406	BOLT, 1/4-20 UNC - 0.75, GR.5, YELLOW ZINC PLATED
6	526-0507	BOLT, 5/16-18 UNC - 0.875, GR.5, YELLOW ZINC PLATED
7	526-0810	BOLT, 1/2-13 UNC - 1.25, GR.5, YELLOW ZINC PLATED
8	526-6105	NUT, STOVER LOCK, 1/2-13 UNC, GR.5, YELLOW ZINC PLATED
9	526-6111	NUT, STOVER LOCK, 5/16-18 UNC, GR.5, YELLOW ZINC PLATED
10	526-7104	NUT, FLANGE, 1/4-20 NC, GR.5, PLTD.
11	550-5204	WASHER, INCH, YELLOW ZINC PLATED
12	550-5205	WASHER, FLAT, 5/16 - Regular - Type B, GR.5, YELLOW ZINC PLATED
13	550-5308	WASHER, FLAT, 1/2" - SAE, GR.5, YELLOW ZINC PLATED
14	417-0018A	AMBER WARNING LIGHT C/W HARDWARE
15	417-0019A	RED WARNING LIGHT C/W HARDWARE
16	839-2053	COMMON LIGHT BRACKET LIGHT BRACKET

**PARTS DETAILS – PERFECT HITCH**



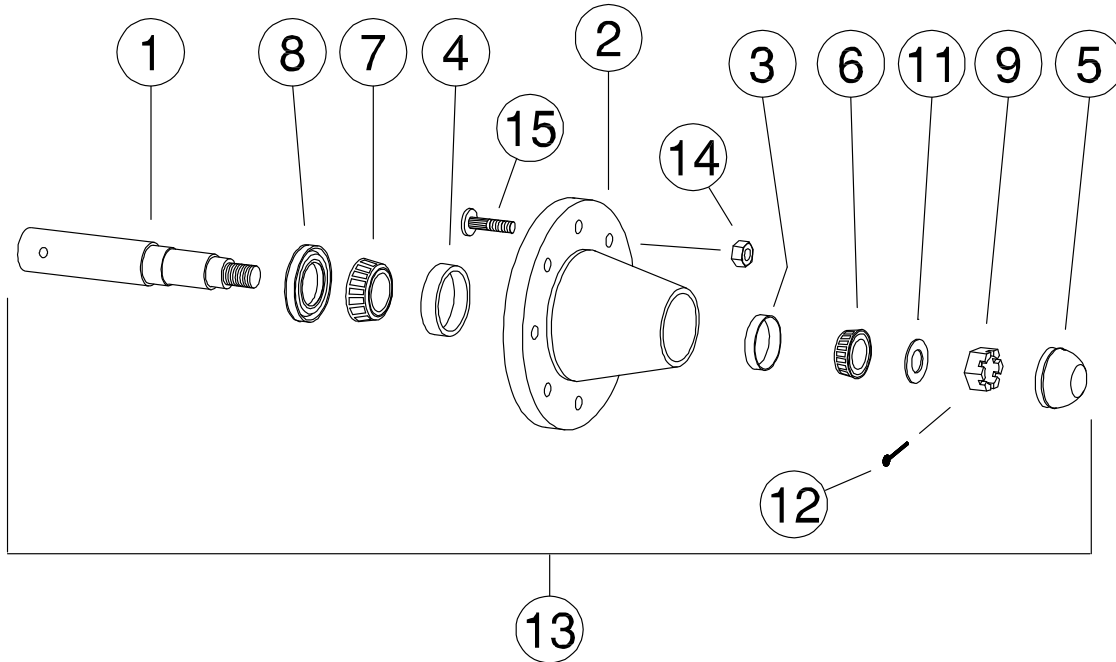
ITEM #	PART #	DESCRIPTION
1	423-0001	Perfect Hitch Assy Cat3 (PP1-V3A-10)
2	423-0003	Perfect Hitch Assy Cat3 w/ Clevis (PP1-206 VR)
3	423-0005	Base Hitch (PP1-301-V3)
4	423-0006	Clevis (PP1-208VR-10)
5	423-0017	Top Plate Perfect Hitch (PP1-302V)
6	423-0018	V-Block (PP1-203VR)
7	423-0019	Neoprene Cushion (PP1-205H)
8	526-1224	3/4" x 3" Capscrew, NC, Gr.5, Pltd.
9	526-6107	3/4" Stover Lock Nut, NC, Gr.B, Pltd.
10	526-1241	3/4" x 5-1/2" Capscrew, NC, Gr.5, Pltd.

The sliding V-block has a polyurethane cushion which is made to flex. The cushion also acts as a shock absorber to reduce driveline stress, giving driveline components longer life. **Do not remove all the cushions! Install the perfect hitch components with bolt head on the bottom and the top plate on top.**

Always adjust the V-block to your tractor draw pin size by following these steps:

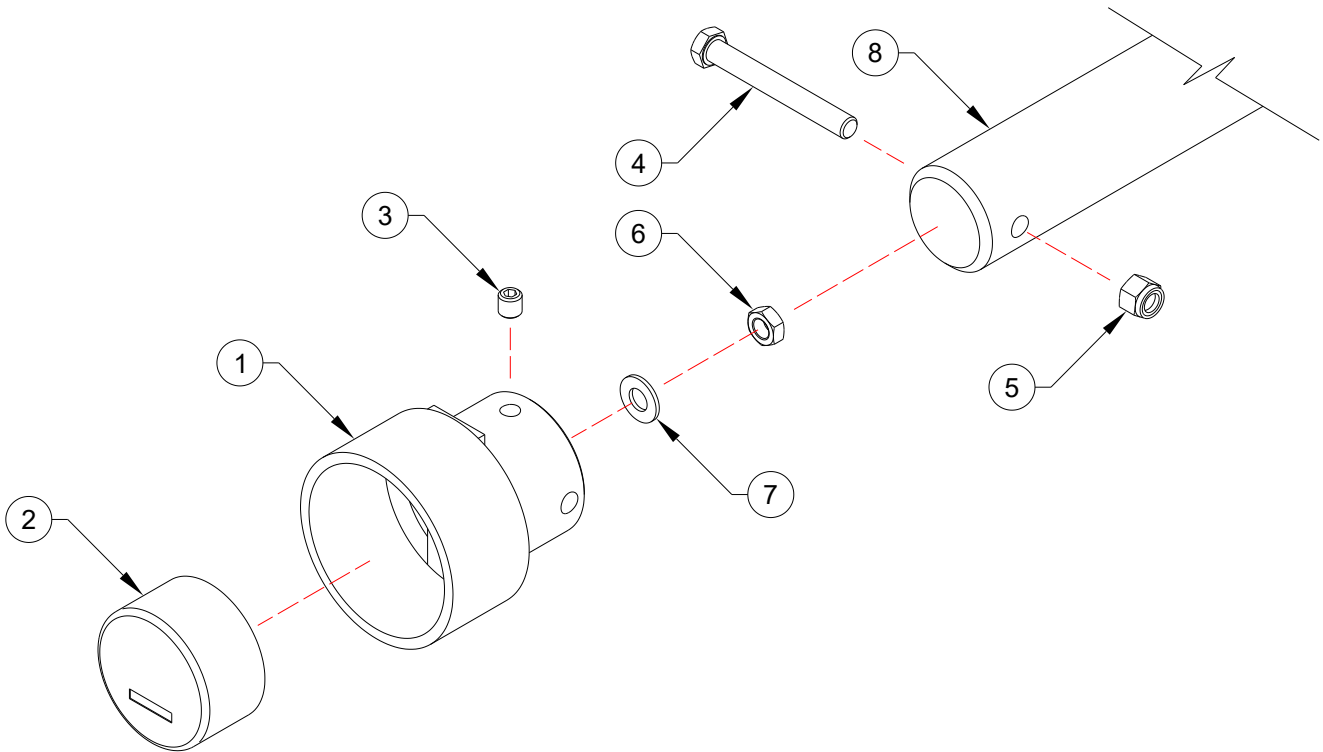
1. Remove top plate by unscrewing 3/4" bolt from bottom of Perfect Hitch and lifting top plate off.
2. The polyurethane cushion can be laid flat to achieve an extra 1/4" of adjustment.
3. If more closure is needed metal spacers (not supplied) can be placed behind the cushions to push the V-block forward and closer to the draw pin hole to tractor draw pin size.
4. Replace top plate and re-install 3/4" bolt tightly (Approx. 200 ft/lb).

**PARTS DETAILS – HUB & SPINDLE**



ITEM #	PART #	DESCRIPTION
1	203-6044	812 Spindle, Ø2-1/2" X 11-3/4" Long
2	200-6011	812 Hub (complete)
3	201-6016	Outer Cup LM2720
4	201-6017	Inner Cup 3720
5	202-6013	DC 17 Dust Cap
6	290-6013	Outer Bearing, 2790
7	290-6014	Inner Bearing, 3780
8	295-6016	SE 17 Seal
9	534-7816	1" Castle Nut, NF, Gr.5, Black
11	554-5303	1" Spindle Washer, Black
12	556-0614	3/16" x 1-3/4" Cotter Pin, Pltd.
13*	120-1246	812 Hub & Spindle Assembly
14	543-5563	9/16" Wheel Nut, UNF
15	543-5564	9/16" Wheel Stud

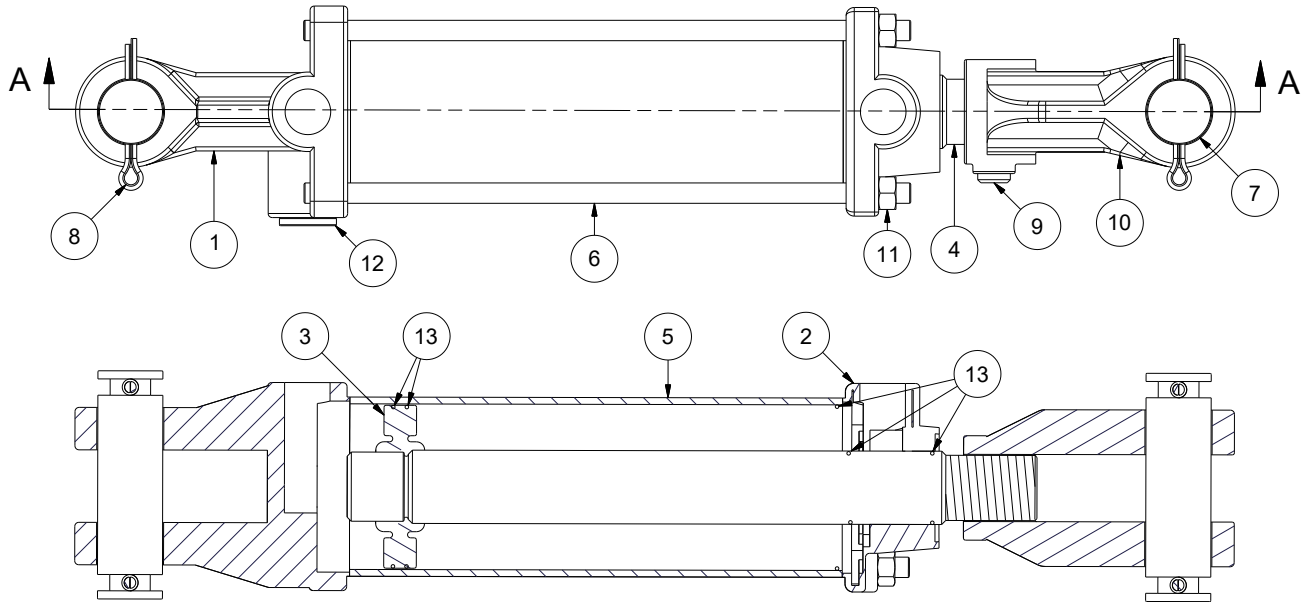
**PARTS DETAILS – ACRE METER**



ITEM #	PART #	DESCRIPTION
1	112-0258	Acre Meter Housing (Ø4") Measure before ordering replacement meter
2	Varies	Arce Meter To Order an Acre Meter Please Call Forster Toll Free # <a href="tel:1-800-661-2994">1-800-661-2994</a>
3	518-0608	3/8" x 1/2" Set Screw, NC, Black
4	526-0832	1/2" x 4" Capscrew, NC, Gr.5, Pltd.
5	526-7508	1/2" Stover Lock Nut, NC, Gr.5, Pltd.
6	525-6108	1/2" Jam Hex Nut, NC, Gr.5, Pltd.
7	550-5208	1/2" B.S. Flat Washer, Pltd.
8	827-0017	2-7/16"Ø x 14-3/4" Replaceable Drum Shaft

**PARTS DETAIL – CYLINDERS**

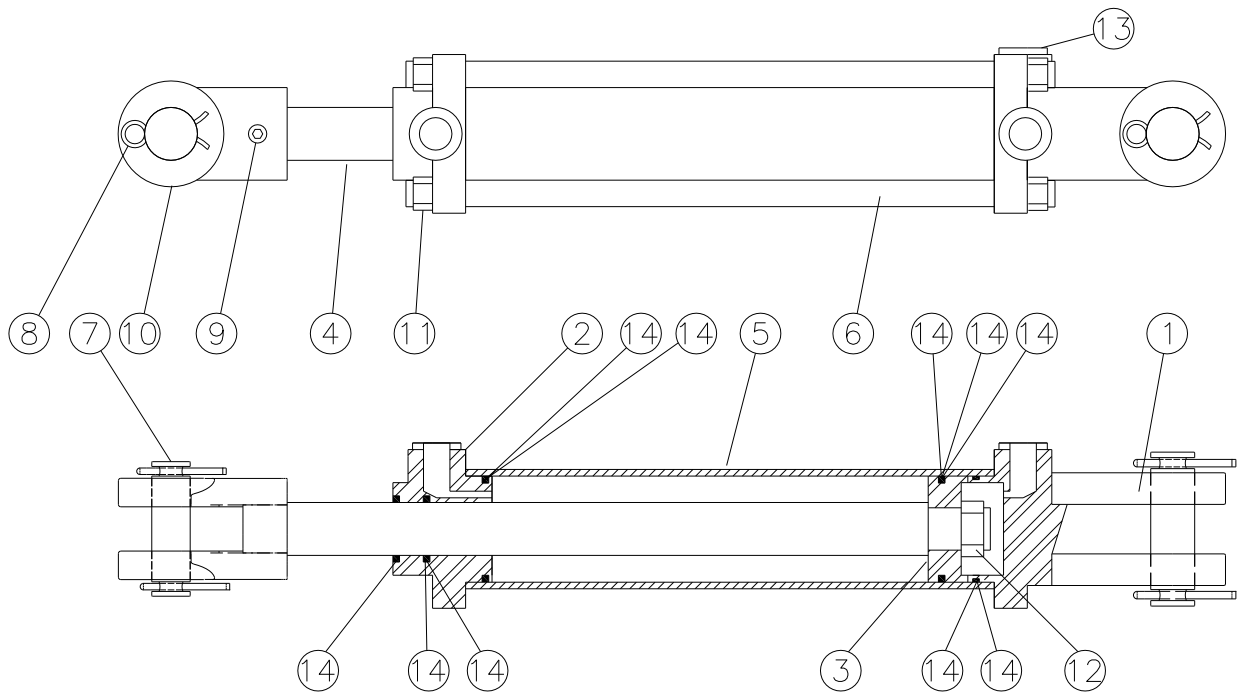
**MONARCH 2" X 16"**  
**MONARCH PART NUMBER 648683**  
**RITE WAY PART NUMBER 030-5972**



<b>ITEM #</b>	<b>PART #</b>	<b>DESCRIPTION</b>
1	293008	Clevis Cap 2.00 - 3/8 ORB- 1"
2	293016	Rod Cap 2.00 - 1.13 - 3/8" ORB - TX
3	293010	Piston 2.00 - TX
4	194893	Seal Hallite 605 Rod - 1-1/8"D
5	498511	Cylinder Tube - 2.00 x 16.00 - TX
6	494181	Tie Rod 5/16" - 16 - TX - Washed
7	134953	Cylinder Pin Ø1" X 3.37" HP / COT
8	135995	Cotter Pin, 3/16" x 1-1/2" Hammer Lock
9	148000	Socket Set Screw, 3/8" UNC x 1/2" KNUR
10	293009	Rod Clevis 1" ID x 1" - TX
11	128501	5/16" Hex Nut, NC, Gr.B, Black
12	186530	Plug 3/8 - 18 NPTF Dry Seal
13	639572	Seal Kit, RK 20L-112 Lion Hyd. Rep. Kit

**PARTS DETAIL – CYLINDERS**

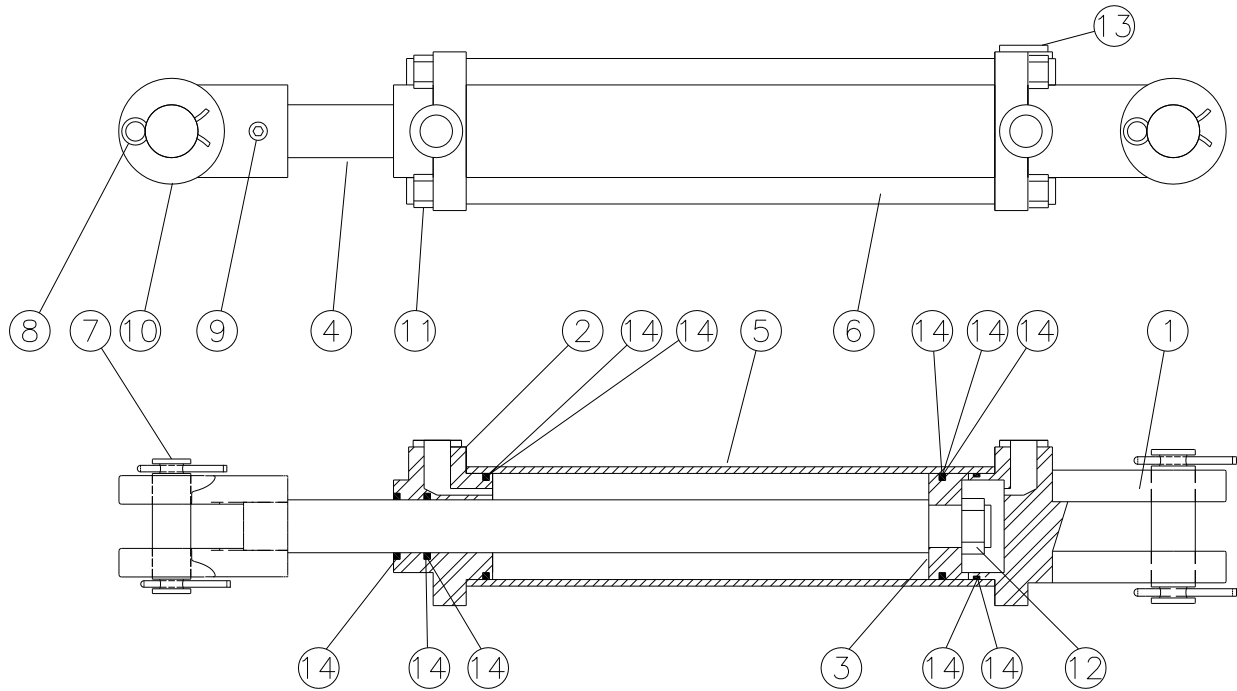
**MONARCH 3-1/2" X 14"**  
**MONARCH PART NUMBER 671626**  
**RITE WAY PART NUMBER 030-5981**



<b>ITEM #</b>	<b>PART #</b>	<b>DESCRIPTION</b>
1	492676	Clevis Cap 3-1/2 - 3/4" NF ORB @ 90°
2	492381	Rod Cap 3-1/2 - 3/4" ORB, 1-3/43" ID
3	292518	Piston 3-1/2 x 1 - TL / TC
4	194897	Seal Hallite 605 Rod Ø1-3/4"
5	491804	Cylinder Tube 3.5 - 14
6	492344	Tie Rod 5/8 - 14", NF, Gr.5, - TL / TC
7	134953	Cylinder Pin Ø1" x 3.37 for HP / COT
8	135995	Cotter Pin, 3/16" x 1-1/2" Hammer Lock, Pltd.
9	148390	Socket Set Screw, 3/8" UNC x 1/2" KNUR
10	492652	Rod Clevis 1-1/4" ID x 1"
11	128271	5/8" Hex Nut, NC, Gr.5, Black
12	130560	Piston Hex Nut 1-1/4" ID, Gr.B
13	186562	Port Plug 3/4", NF Socket Head c/with O-Ring
14	649219	Seal Kit, RK 35L-175 Lion Hyd. Rep. Kit

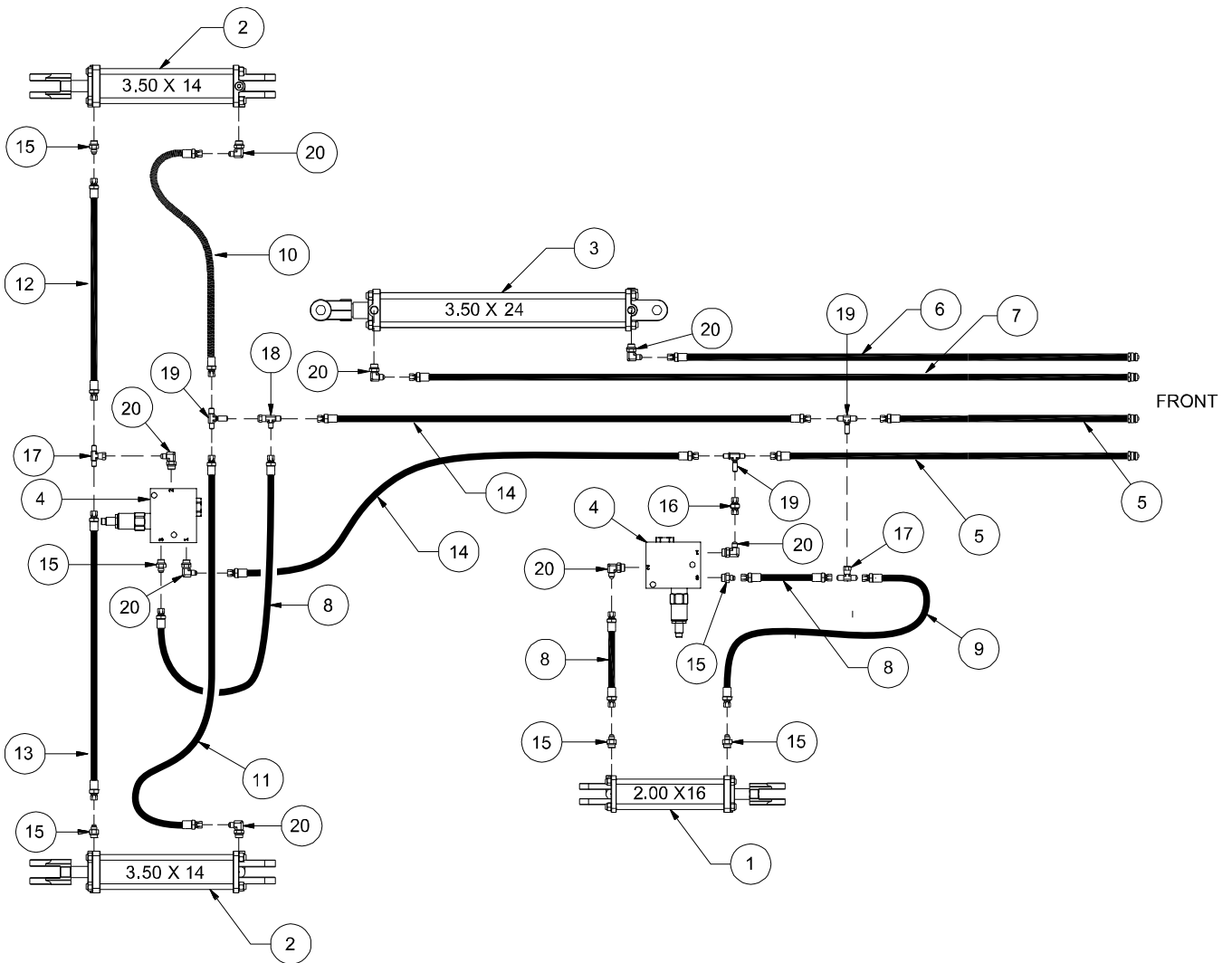
**PARTS DETAIL – CYLINDERS**

**MONARCH 3-1/2" X 24"**  
**MONARCH PART NUMBER 671642**  
**RITE WAY PART NUMBER 030-5982**



ITEM #	PART #	DESCRIPTION
1	492676	Clevis Cap 3-1/2", 3/4" NF ORB
2	492381	Rod Cap 3-1/2", 3/4" ORB, 1-3/4" ID
3	292518	Piston 3-1/2 x 1- TL / TC
4	194897	Seal Hallite 605 Rod Ø1-3/4"
5	491814	Cylinder Tube, 3-1/2 x 24" - TL / TC
6	492354	Tie Rod, 5/8" x 24", NF, Gr.5 - TL / TC
7	134953	Cylinder Pin Ø1" x 3.37 for HP / COT
8	135995	Cotter Pin, 3/16" x 1-1/2" Hammer Lock, Pltd.
9	148000	Socket Set Screw, 3/8" x 5/16", NF, Pltd.
10	493168	Rod Clevis 1-1/2" x 1" - TL / TC
11	128271	5/8" Hex Nut, NF, Gr.5, Black
12	130560	Piston Hex Nut, 1-1/4" ID, Gr.B
13	186562	Port Plug, 3/4", NF, Socket Head c/with O-Ring
14	649219	Seal Kit, RK 35L-175 Lion Hyd. Rep. Kit

**PARTS DETAILS – HYDRAULICS**





## PARTS DETAILS – HYDRAULICS

ITEM #	PART #	DESCRIPTION
1	030-5972	20TX16-112 (648683) 3/4" ORB @ 90° (Telescopic-Hitch)
2	030-5981	35THC14-175 (671626) 3/4" ORB @ 90° (Transport Axle)
3	030-5982	35TC24-175 (671642) 3/4" ORB @ In Line (Main Swing)
4	310-5017	Sequencing Valve (Fastline PRCV106A-308T)
5	313-6544	1/2" NPT M. x 3/8 JIC Sw.F 3/8 Hose - 144" c/w Pioneer Tip
6	313-6704	1/2" NPT M. x 3/8 JIC Sw.F 3/8 Hose - 278" c/w Pioneer Tip
7	313-6705	1/2" NPT M. x 3/8 JIC Sw.F 3/8 Hose - 306" c/w Pioneer Tip
8	313-7926	3/8 JIC Sw.F x 3/8 JIC Sw.F 3/8 Hose - 26"
9	313-7939	3/8 JIC Sw.F x 3/8 JIC Sw.F 3/8 Hose - 39"
10	313-7952	3/8 JIC Sw.F x 3/8 JIC Sw.F 3/8 Hose - 52"
11	313-7962	3/8 JIC Sw.F x 3/8 JIC Sw.F 3/8 Hose - 62"
12	313-7968	3/8 JIC Sw.F x 3/8 JIC Sw.F 3/8 Hose - 68"
13	313-7983	3/8 JIC Sw.F x 3/8 JIC Sw.F 3/8 Hose - 83"
14	313-7994	3/8 JIC Sw.F x 3/8 JIC Sw.F 3/8 Hose - 154"
15	316-0302	1/2" ORB M x 3/8" JIC M-ADAPTOR
16	317-5678	3/8" JIC Sw. F x 3/8" JIC Sw. F Union
17	318-5701	Hydraulic Tee - 3/8" JIC M (x2 Run) x 3/8" JIC Sw F (Branch)
18	318-5705	Hydraulic Tee - 3/8" JIC M (Run & Branch) x 3/8" JIC Sw F (Run)
19	318-5714	3/8" JIC M x 3/8" JIC M x 3/8" JIC M - BULKHEAD BRANCH TEE
20	319-5710	1/2" ORB M x 3/8" JIC M - 90 DEGREE ELBOW

**NOTES**